

Training on Integrating Adaptation to Climate Change into Development Planning

13. – 16. January 2013
Magaliesberg,
South Africa
Mount Grace Country House



Group picture

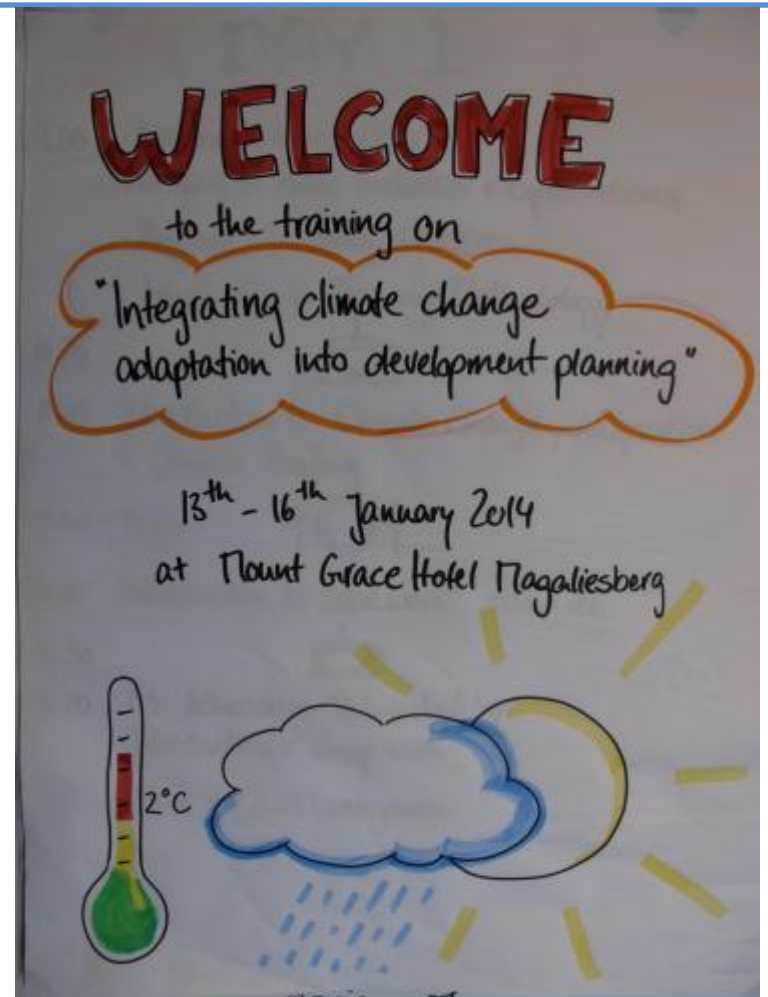


Credits and acknowledgements

Many have contributed to the success of this workshop.

- Concept of training workshop: GIZ Climate Support Programme, DEA CCA team, Timo Leiter and Britta Heine
- Organisation: Zane Abdul, Cindy Mabuza & Lindiwe Ratlhagane
- Pictures: Britta Heine

Lively participation, high spirits and motivation: all participants!



Therefore, we would like to thank you very much! ☺

Programme of the training workshop

<p>Training on "Integrating Climate Change Adaptation into Development Planning"</p>			
<p>Session 1 9.00 - 10.30 ☕ Session 2 11.00 - 12.30 ☕ Session 3 14.00 - 15.30 ☕ Session 4 16.00 - 17.30 ☕</p>			
Monday	Tuesday	Wednesday	Thursday
Welcome + Introduction to the training	M3: Assess Vulnerability (continue)	Roleplay + reflection on M3 - M5	Peer advise on CCA / climate proofing
Introduction to CCA + Climate Proofing	M4: Identify adaptation options	Introduction to M+E of adaptation	Action planning for next steps Evaluation + Closure
Introduction to casework: Zanadu	M4 Identify adaptation options (continue)	CCA in South Africa: LTAS + policy alignment → Expert inputs	End at 13.00 ☺
M3: Assess Vulnerability	M5: Select adaptation measures	Market place: your experience with CCA / climate proofing	
<p>Co-Management Team 17.30 - 18.00</p>			

Yellow cards:
Introductory sessions & case work

White cards:
Sessions related to South Africa


List of participants

- Ramavhona Nkoniseni (DEA CC Adaptation)
 - Vhalinavho Khavhagali (DEA CC Adaptation)
 - Ntando Mkhize (DEA Biodiversity & CC)
 - Sibonelo Mbanjwa (DEA CC Adaptation)
 - Shonisani Munzhedzi (DEA CC Adaptation)
 - Alloycius Salagae (Water Affairs)
 - Mfanelo Ntombela (Water Affairs)
 - Anna Mokoena (COGTA-GP)
 - Mokoni Kgolofelo (COGTA-GP)
 - Mphidi M.F (Limpopo Economic development and environment)
 - Gezephi Nyalunga (MP DEDET)
 - Enoch Mhlanga (Rural development)
 - Mutswari Nditsheni (CITY of Tshwane)
 - Mercedes Mathebula (City Of Tshwane)
 - Erick Mbedzi (City of Joburg METRO)
 - Mikateko Sithole (Bojanala platinum district municipality)
 - Abel Moatshe (Eskom)
 - Rina Taviv (Gauteng department of agriculture: climate change)
 - Dr Sean O'Donoghue (eThekweni Municipality)
 - Raylene Nel (Northern Cape)
 - Dominique Doyle (Earthlife NGO)
 - Rhulani Mathebula (DEDECT NW)
 - Patrick Matsau (Gauteng Agriculture)
 - Zonge Bango (Rural Development)
 - Mncedisi Madolo (DRDLR)
 - Moses Musiwalo Khangale (DCOG NDMC)
- Trainers:
- Timo Leiter (GIZ)
 - Britta Heine (Independent Trainer)

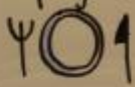
Monday, 13 January

DAY 1

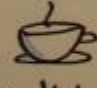
9.00 • Welcome + Introduction
 • Getting to know each other + expectations
 • Program + Learning objectives
 • Introduction to Training Methodology

10.30 

11.00 Introduction to Climate Change, Adaptation
 + Climate Proofing

12.30 - 14.00 

14.00 Introduction to casework: Zanadu

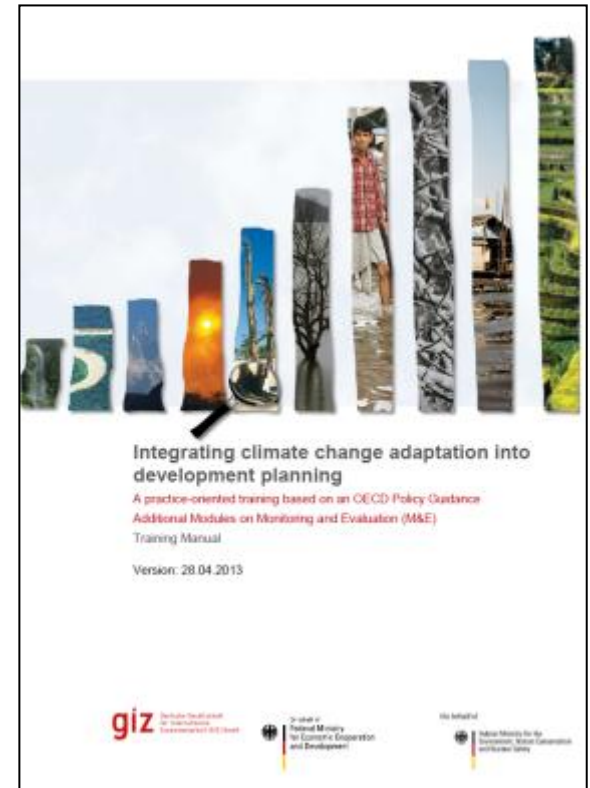
15.30 

16.00 113: Assessing Vulnerability
 Introduction + Group work

17.30 End / Co-Management

Introduction to the training

- The objectives of the Training “**Integrating climate change adaptation into development planning**” are:
 - To **make CCA tangible** for practitioners in a step-by-step approach
 - To **enable action on CCA** and its **mainstreaming into planning**
- The target group is:
 - Administration officials, planners and practitioners in various sectors and other relevant sectors, at international, national, provincial and local levels
- The training uses the **Harvard Case Method** as a training methodology which **supports learning success** through practice-oriented interactive exercises and **encourages to act** and make decisions under uncertainty.
- The training has **10 modules**, going from module 1 “Apply a climate lens” to module 10 “Integrate adaptation into the project cycle”. Additional modules on Climate information, Adaptation M&E and Ecosystem-based Adaptation have been developed in 2013. These additional modules were developed with the support of BMU.
- The training was developed by GIZ on request of OECD Climate Task Team with support from BMZ (2009-2011) and is based on the *OECD Policy Guidance on Integrating Climate Change into Development Cooperation* (find all material of the training [here](#)).
- Further information about the training is provided on AdaptationCommunity.net under [Adaptation Training](#)



BMU (German Federal Ministry for the Environment, Nature Conservation and Nuclear Safety)

BMZ (German Federal Ministry for Economic Cooperation and Development)

Introduction to Climate Proofing: the 4-step approach

Climate proofing is the analysis of policies, programmes, strategies and measures with regard to current or future climate- related challenges and chances and, if relevant, identification of possible modifications.

1. Assessing vulnerability

- Defining the system of interest.
- Who or what is at risk ?
- Climate and non-climatic drivers



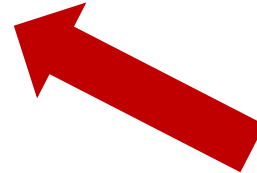
2. Identifying adaptation options

- Entry points
- What to address?
- Possible CCA options



3. Selecting adaptation options

- Criteria to prioritise
- Select most desirable option



4. Monitoring adaptation

- Did it work?
- What can we learn?



Implementation

Introduction to Climate Change Adaptation



Participants find the complete visualisation on the CD

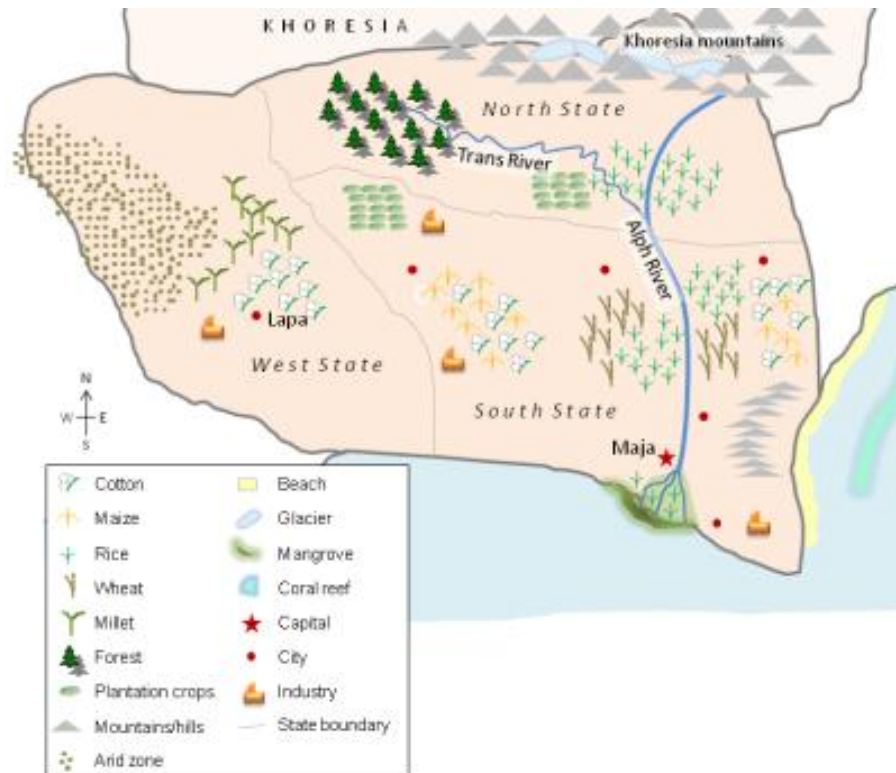
Take-away from the exercise:

- Imagine two basic houses in the same location in a floodplain. Compare a house on stilts and a house a bit higher on the mountain: Do they face the same exposure? Do they have the same sensitivity?
- They have different assets, e.g. car vs. bike, radio or good social relations: Do they have the same adaptive capacity?
- Thus, do they have the same **vulnerability**?

Exposure, sensitivity and adaptive capacity are entry points for action

Introduction to Zanadu

- In this session participants got to know **Zanadu** for the first time.
- The **country** is used for **interactive practical case work** throughout the training “Integrating climate change adaptation into development planning” as a fictitious case, based closely on real life conditions and challenges.



Group Work on M3: Assess vulnerability



Task:

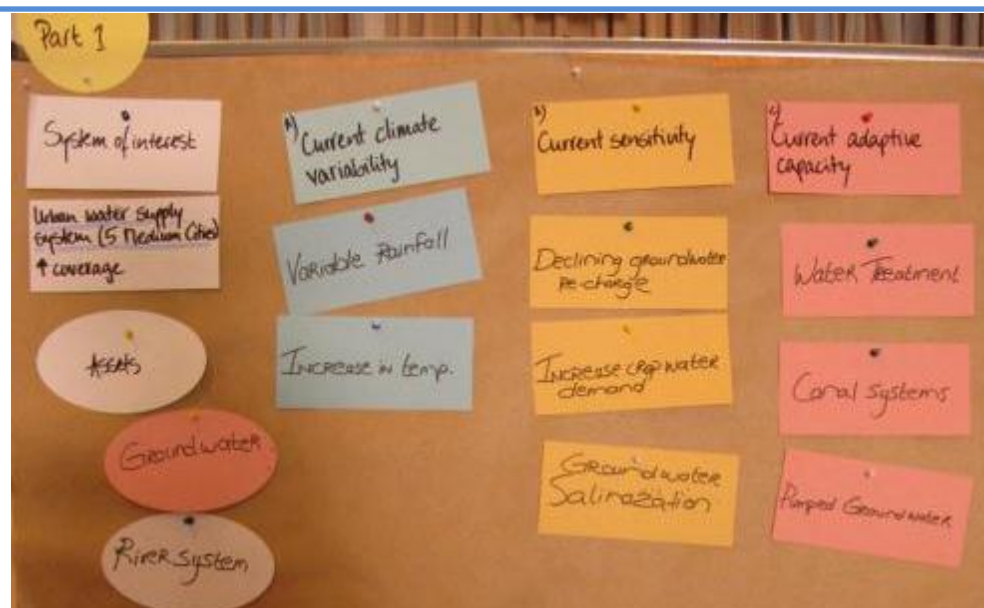
- Imagine to be an advisory to the State Water Authority to support the integration of climate change adaptation in the revision of the South State Water Programme.
- Assess vulnerability in order to identify relevant needs for adaptation.

Tuesday, 14 January

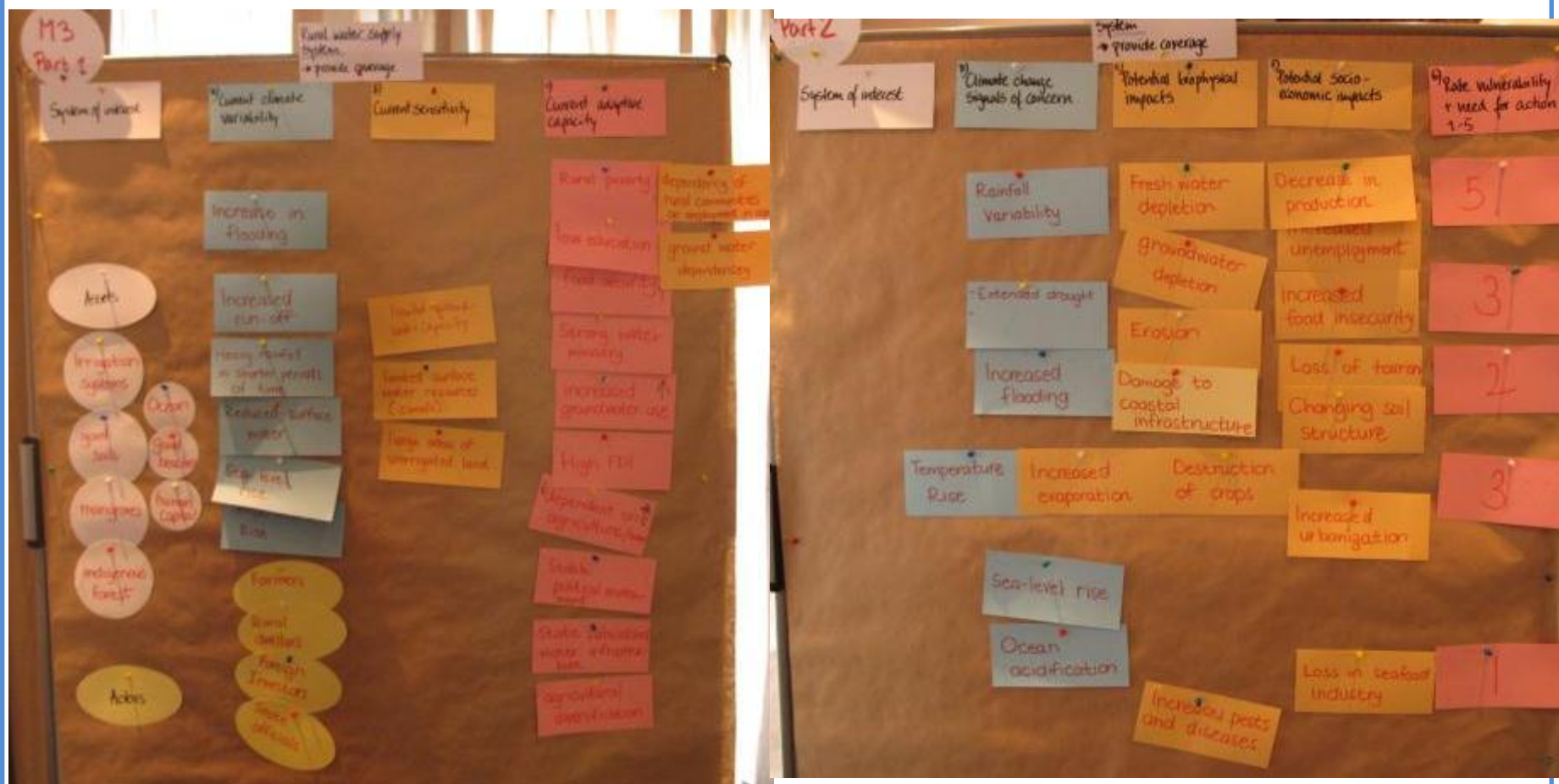
- Presentation of casework results on M3 (**Assess vulnerability**)
- Casework and presentation on M4 (**Identify adaptation options**)
- Casework and brief reflection on M5 (**Select adaptation measures**)



Casework results M3: Group 1

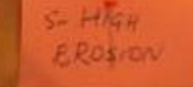


Casework results M3: Group 2



Casework results M3: Group 3





Casework M4 & M5



Broomstick Energizer

No system works without:

- Coordination,
- Communication,
- Establishing roles, so that each member knows what to do and know what others are doing,
- And teamwork!



Wednesday, 15 January

- **Role play on M3-M5** with *Minister Korenadu* (Vhali) and his Chief technical advisor (Britta)
- **Introduction to M&E**
- Reflection on 4-step Approach
- **Long Term Adaptation Scenarios (LTAS)** for South Africa (Input by Prof. Guy Midgley)
- **Policy Alignment Process** (Input by Mr. Zane Abdul / GIZ's Climate Support Programme South Africa)
- **Market place:** exchange of experience

Presentations to Minister Korenadu



Fig. 1. Optimal climate change adaptation measures necessary to ensure the expansion of water supply coverage in 5 medium cities of South State.

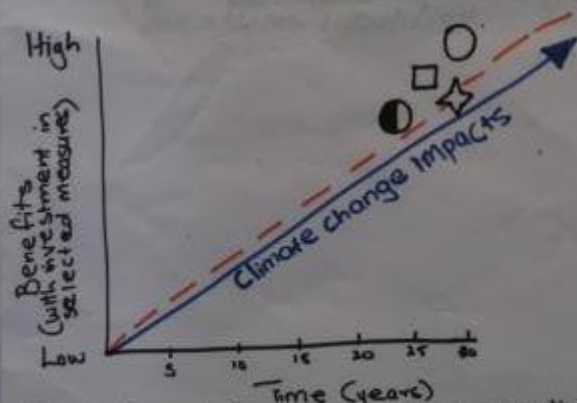


Fig. 2. Extent of benefits derived over time with proper investment of resources in optimal climate change adaptation measures identified.

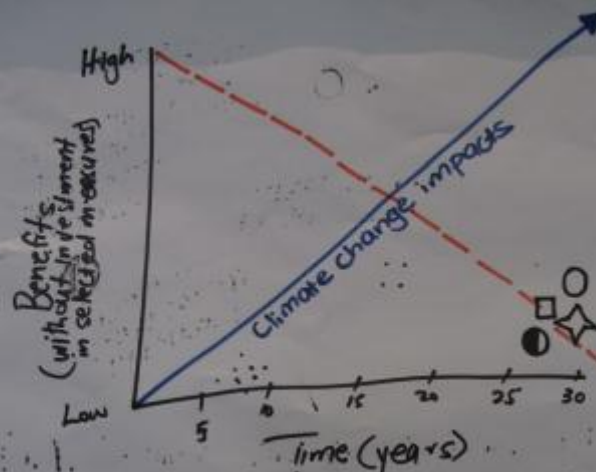


Fig. 3. Extent of benefits derived over time with no investment of resources in the optimal climate change adaptation measures identified.

Introduction to M&E

1. Why M&E? What can M&E be used for?

- Monitoring for feedback
indication if we are going to the plan
- Eval: Determine impact of intervention
- Identify champions/showcase
- Feedback System
- Measuring progress; indicating what needs to be changed
- M&E depends on context/institutional arrangement
- Indicates if policies need to be reviewed + amended
- assists in dealing with uncertainty
- check funding
- improve implementation
- lessons learned
- accountability
- avoid mal-adaptation
- integration of new information

2. What makes the monitoring + evaluation of CCA difficult?

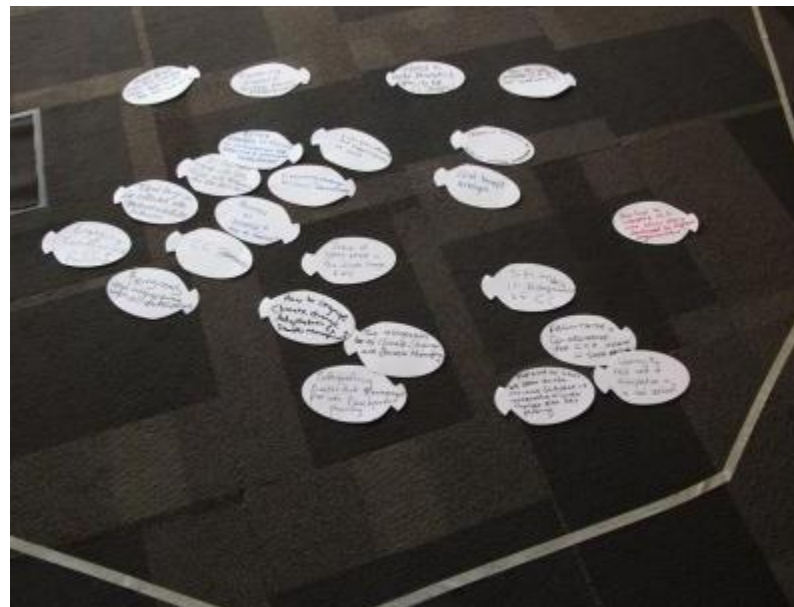
- involves a lot of actors → complexity
- CC occurs over long period time; impact of CCA can be measured only after long time
- setting up indicators
- financing (lack)
- cross-cutting issue; difficult to define the CCA option (in addition to "normal" development)
- requires systematic approach (climate proofing)
- setting targets
- using information

build onto existing systems!

Reflection on 4-step Approach

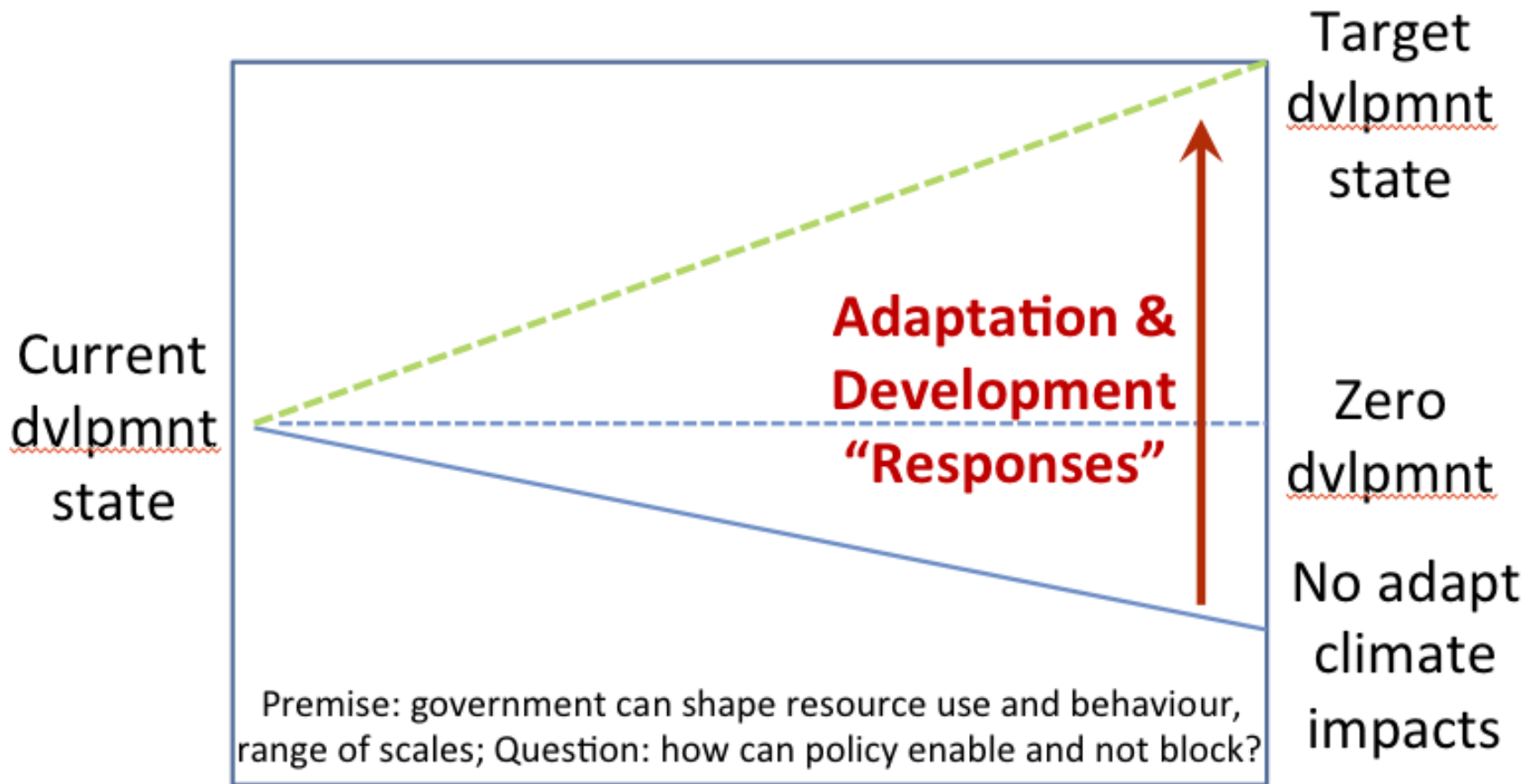


- ← What 'fishes' did you catch for your own work (i.e. **what have you learned so far?**)?
- What 'fishes' are still floating around?



LTAS by Prof. Guy Midgley

What is an LTAS?



Policy Alignment Process (by Zane Abdul)

- As presented by Prof. Midgley (see previous slide), **current policy objectives may be strongly impacted by climate change**, e.g. agricultural production may be under pressure from water stress
- For each of the eight adaptation sectors, **the policy alignment process assessed**
 - Which goals and objectives sector policies and plans currently have
 - Whether they address the objectives of the NCCRP
 - **In how far they need to be amended to reflect climate change impacts and incorporate adaptation**
- Thus, the policy alignment shows **what needs to be done to mainstream adaptation into existing policies and plans**
- The review also helps to reveal **conflicting policy objectives** between sectors, e.g. more water for agriculture *and* settlements although there may actually be less water for both in a drier scenario
- The analysis of the policy alignment process is documented in a **table for every sector**, which is available on the training CD
- The policy alignment audit is mandated by the NCCRP Chapter 10.1

Market place

10 min

- ➔ What is your organisation doing on CCA?
- ➔ What are your major challenges?
- ➔ What do you need to move forward?
- ➔ What are your main lesson learned?

Challenges

Needs

Lessons learned

- pooling resources for everyone's benefit

- dealing with Climate Proofing in practice

- CC is only one challenge amongst others

- Capacity building
inter-departmental & sectoral collaboration
disseminating info. to the ground

- dedicated CC unit (organisational structure)
Help on how to do so

- Top-level needs to be in favour of CCA

Exchange of experience

Presentations:

- Sean: Institutionalising adaptation in Durban

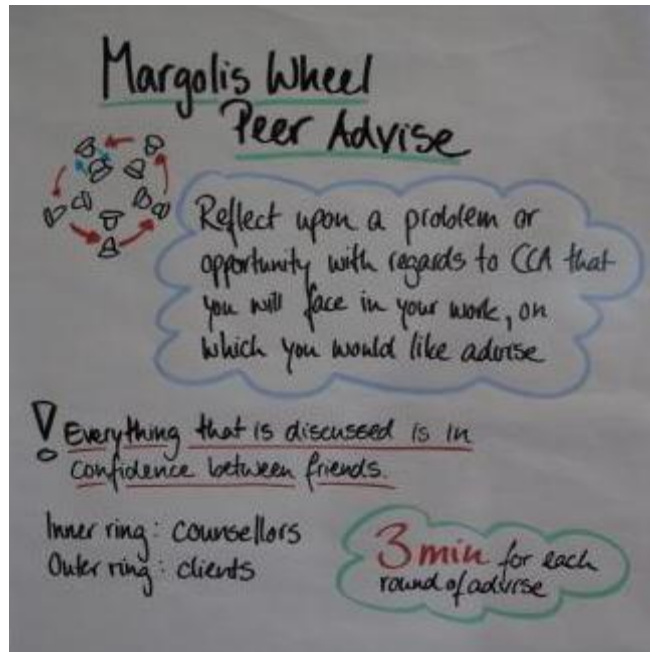
- Mika: BPDM
- Madolo: Department of Rural Development & Land Reform Climate Change Adaptation Plan
- Mosima: Limpopo Green Economy Plan
- Gezepi: Mpumalanga Climate Change Response Strategy
- Mfanelo: Climate Change Status Quo Analysis for Water sector
- Abel: Escom Adaptation Strategies
- Nkoni: DEA Climate Change Adaptation Activities

Thursday, 16 January

- **Peer advise:** Margolis wheel
- **Action planning** for next steps
- **Evaluation**
- **Certificates**



Peer advise: Margolis wheel



Action planning for next steps

DEA vision on the Way Forward including possible next steps:

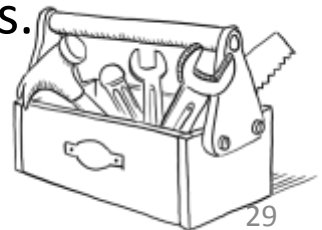
- Maintaining an **informal group of community of practice**
- **Train the trainer course** (usually a 10 days training for up to 20 people from diverse but relevant backgrounds committed to training others)
- **Virtual Webinar** around topics of interest for discussions among participants and others interested ([exchange online for 60-90 min, see examples on AdaptationCommunity.net -> Exchange](#))
- **Face-to-face meeting reflecting on follow-up activities** (What do you need for application of climate proofing/ gaps in your sector?)
- **Coaching Process** for particular members of this group to support climate proofing in specific sectors or subnational bodies of government



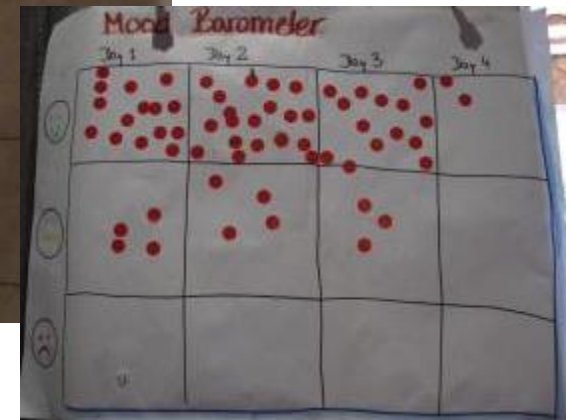
Action planning for next steps

Recommendations **from participants** directed to DEA:

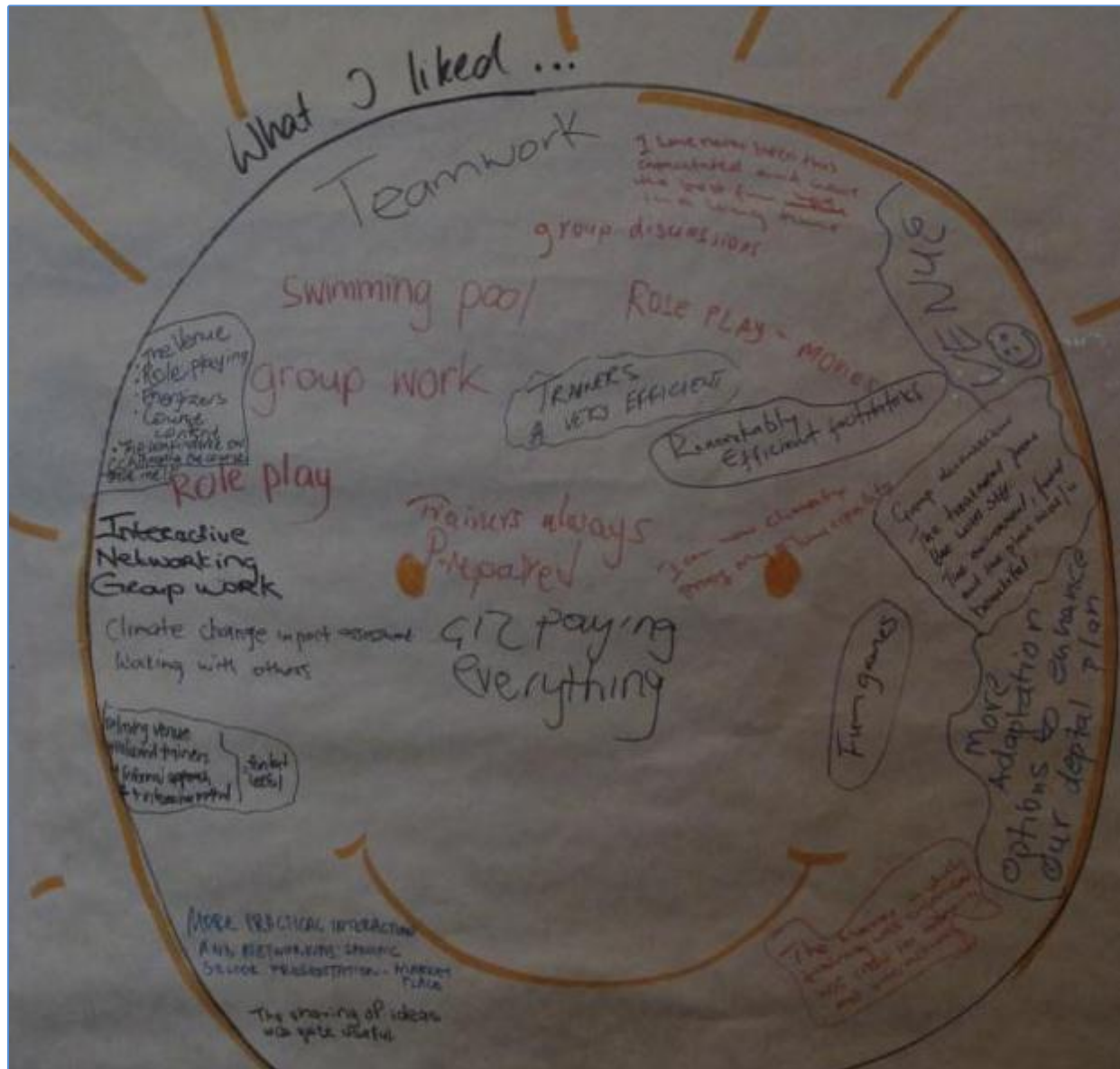
- **Strong need for national trainers** in order to spread the climate proofing methodology across the country (Training of Trainers).
- **Link the sector specific coaching to branch strategic sessions** in order to maximise outreach and engage interested directorates of various departments and government bodies.
- Make **better use of existing platforms**: include local level representatives (e.g. National Steering committee, Intergovernmental Relations structures on climate change at local and provincial level) and use such a forum for reporting on development and challenges on CCA.
- Continue to **support the training group as climate change champions**.
- Institutionalise **support to municipalities**.
- Initiate **pilot projects** to support CCA in various provinces.



Evaluation



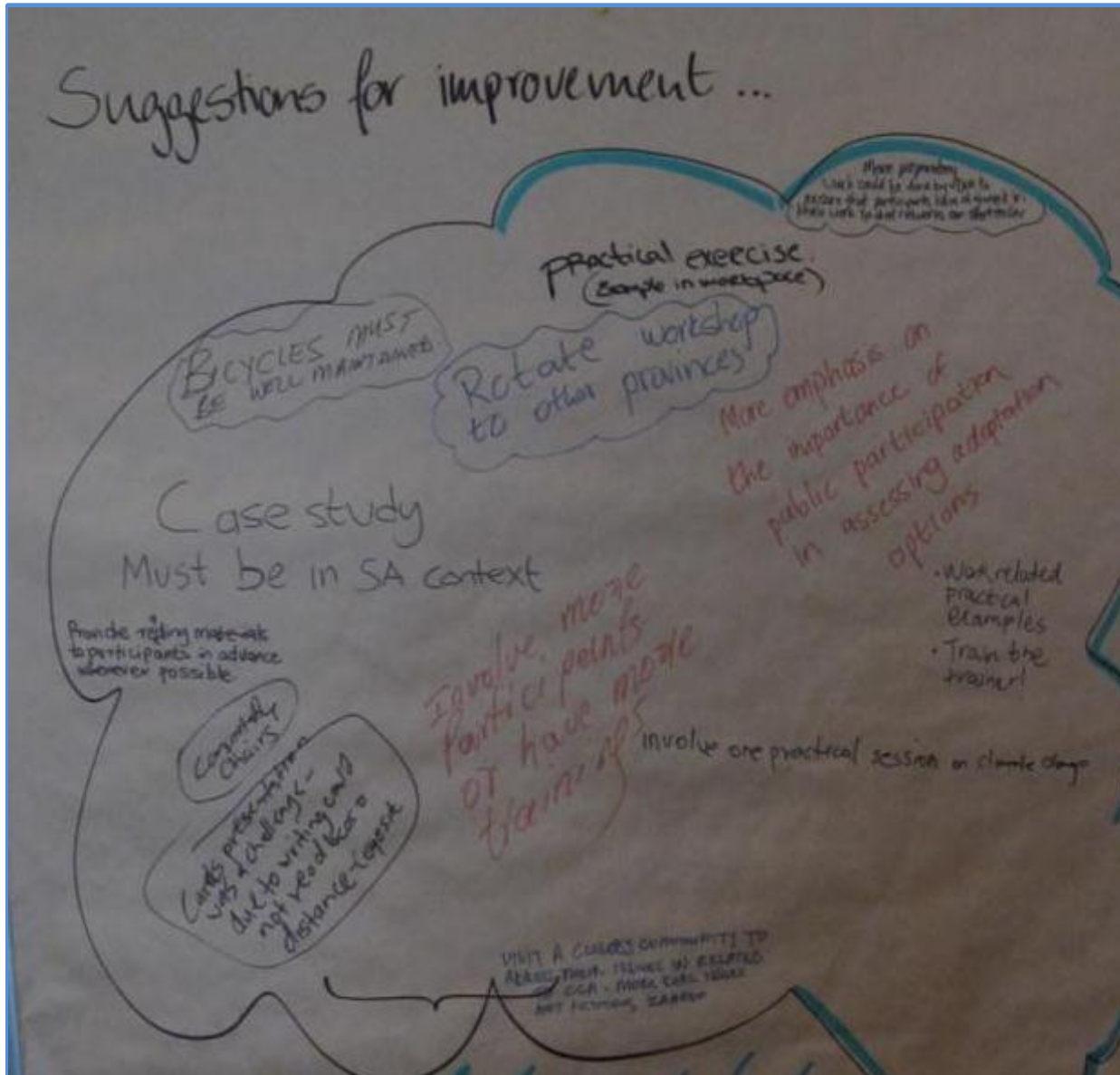
Evaluation: Participants liked...



Key points include:

- Group work
- Role play
- Interactive and inspiring group
- Networking
- New insights for own work on adaptation
- Trainer team
- Venue
- Fun games 😊

Evaluation: Suggestions



- Case studies with SA context
- More emphasis on sharing of experiences
- Clearer handwriting on cards
- Have more workshops like this one in SA
- Conduct a train the trainer event

Further exchange on AdaptationCommunity.net

- For further **exchanging** on adaptation topics, we invite you to visit AdaptationCommunity.net.
- **Key topics:** *Climate Information, Vulnerability Assessment, M&E and Mainstreaming of adaptation.*
- **Webinars** on these topics (become a member to receive invitations!)
- **Examples of good practice adaptation** documented in 'Methods briefs'
- A discussion forum (member's area) for further exchange
- **Further readings** are provided for download



Your trainer team



Timo Leiter

Competence Centre for Climate Change

GIZ Germany

Timo.Leiter@giz.de



Britta Heine

Freelance Consultant & Trainer

Brittaheine@posteo.de