

Scaling up Ecosystem-based adaptation in rural Latin America (EbA LAC)



SISTEMA NACIONAL DE
ÁREAS DE CONSERVACIÓN



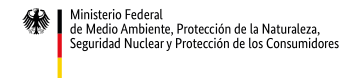
Ministerio del Ambiente,
Agua y Transición
Ecológica



Ministerio de
Ambiente y
Recursos Naturales



Fomentado por:



en virtud de una decisión
del Bundestag alemán



What is EbA?

Ecosystem-based Adaption:

- helps people to adapt to the adverse effects of climate change
- uses biodiversity and ecosystem services
- is part of an overall adaptation strategy



Ecosystem-based options

EbA hybrid options

Infrastructure-based options

Political and social options

ADAPTATION STRATEGY

5 quality criteria

1

Reduces social and environmental vulnerabilities

2

Generates societal benefits in the context of climate change adaptation

3

Restores, maintains or improves ecosystem health

4

Is supported by policies at multiple levels

5

Supports equitable governance and enhances capacities

**Adaptation puts the most vulnerable
people at the forefront:**

**Short-term actions respond
to long-term objectives.**

Conserving nature for climate resilience: Delivering EbA at scale

Scaling-Up Ecosystem-based Adaptation (EbA):

- promotes cost-effective adaptation strategies that contribute to biodiversity conservation, climate mitigation, and sustainable development.

Urgent need:

- urgent need to accelerate and scale **up** actions, because implementation is not advancing at the necessary speed and scale.



Conserving nature for climate resilience: Delivering EbA at scale

Climate finance needs in developing countries:

- Greater than current flows (10-18 times)
- Inaction exacerbates climate risks, losses and damages
- Enhanced financial support to implement EbA achieves climate resilience and biodiversity conservation.



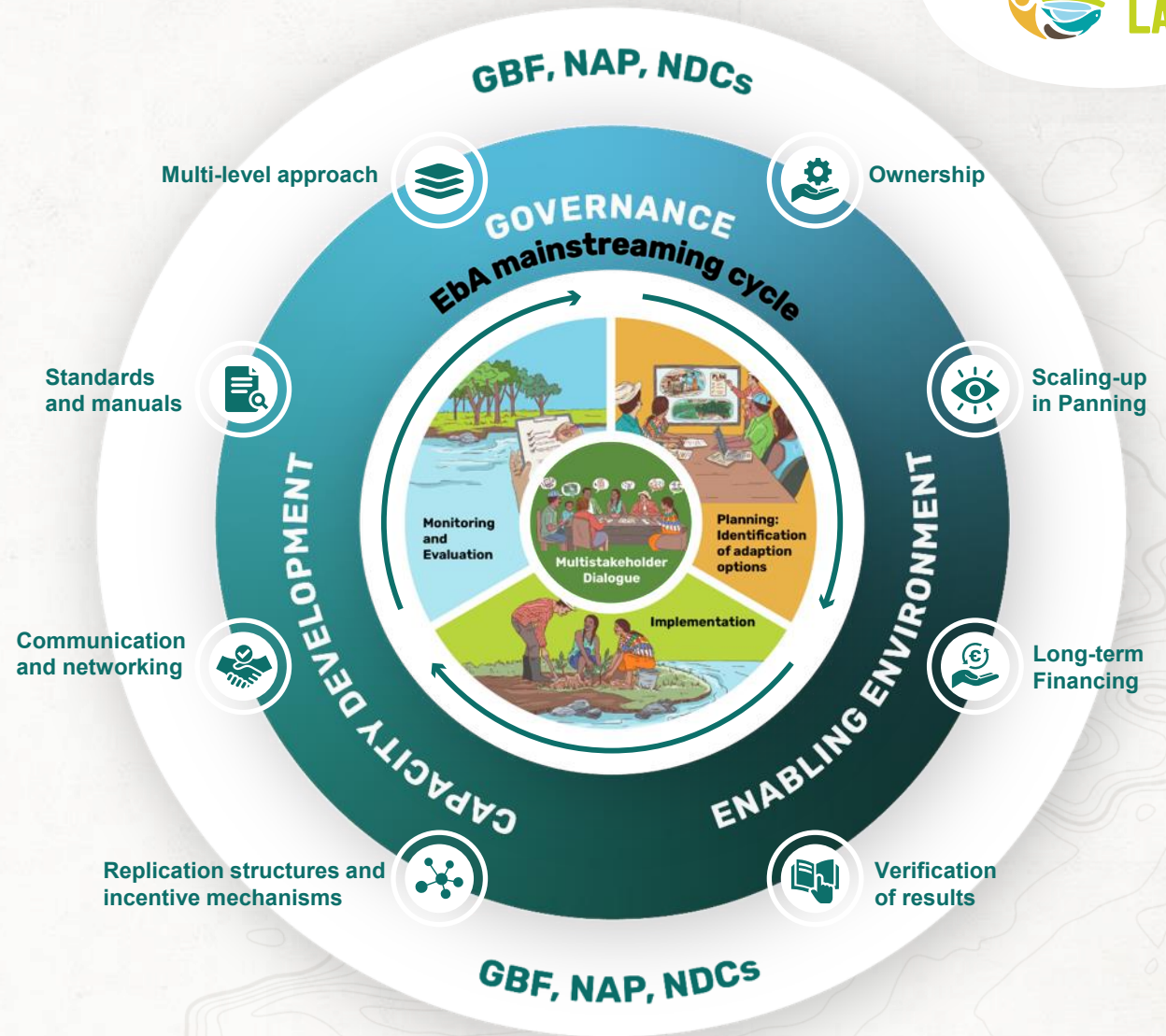
Ma. Cristina Par Tuluxan,
Quiché, rescues biodiversity
with ancestral traditions and
sustainable innovations.

Success factors for scaling-up EbA

Scaling-up EbA at vertical, horizontal and regional level requires harmonized approaches, methods, and guidelines:

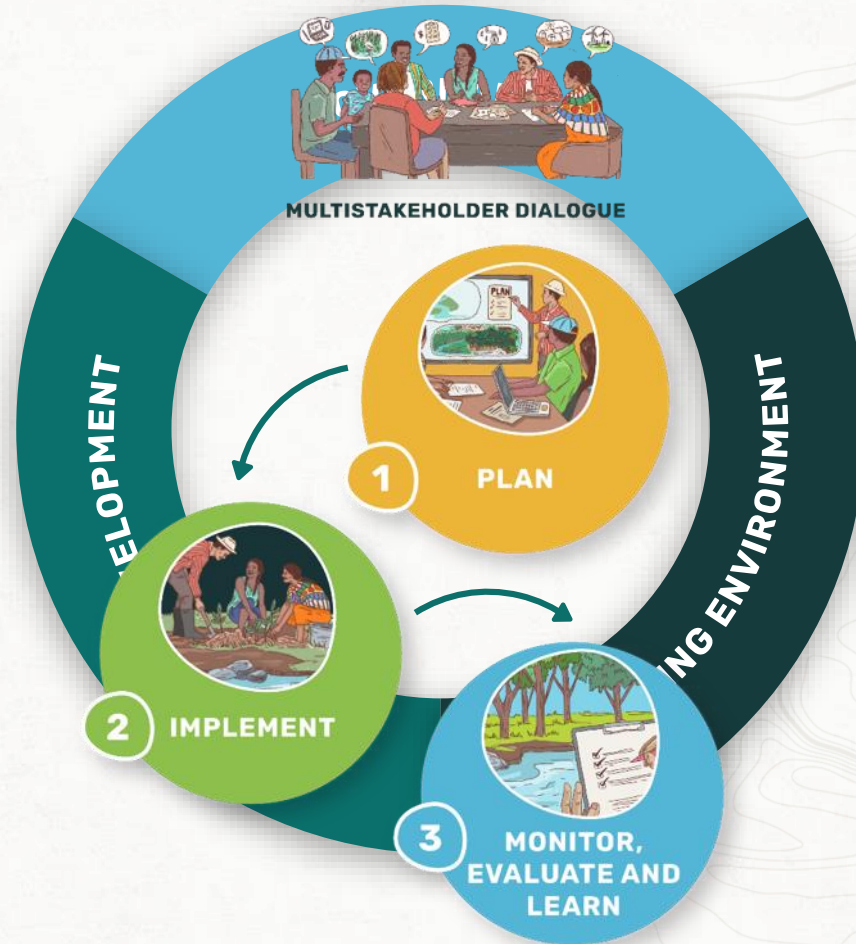
- Adaptative Governance
- Capacity Development
- Enabling Environment

Eight success factors are key for bringing EbA to scale and generating **broad-based and structure building impacts**.

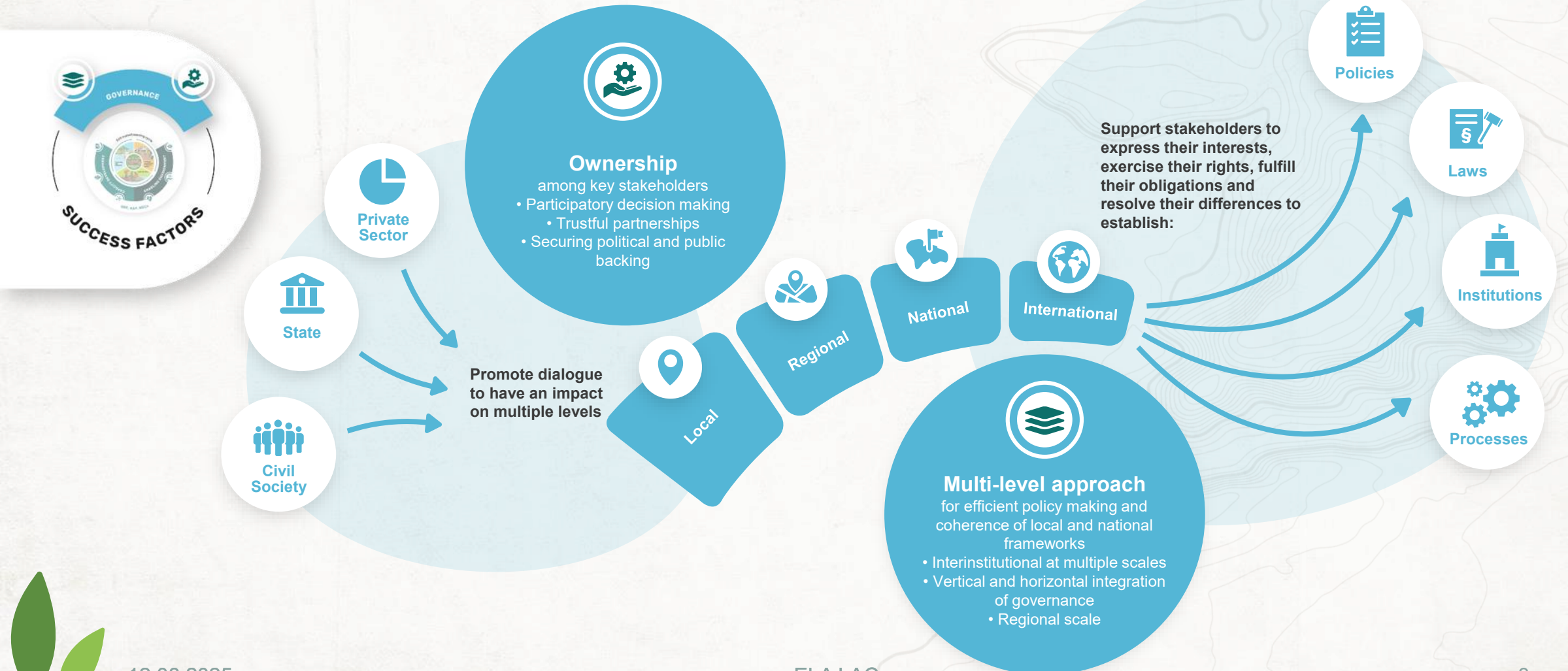


Key factors for Scaling-up EbA to achieve the Paris Agreement (PA), the National Determined Contributions (NDCs) and the National Adaptation Plans (NAP), as well as the Kunming Montreal Global Biodiversity Framework

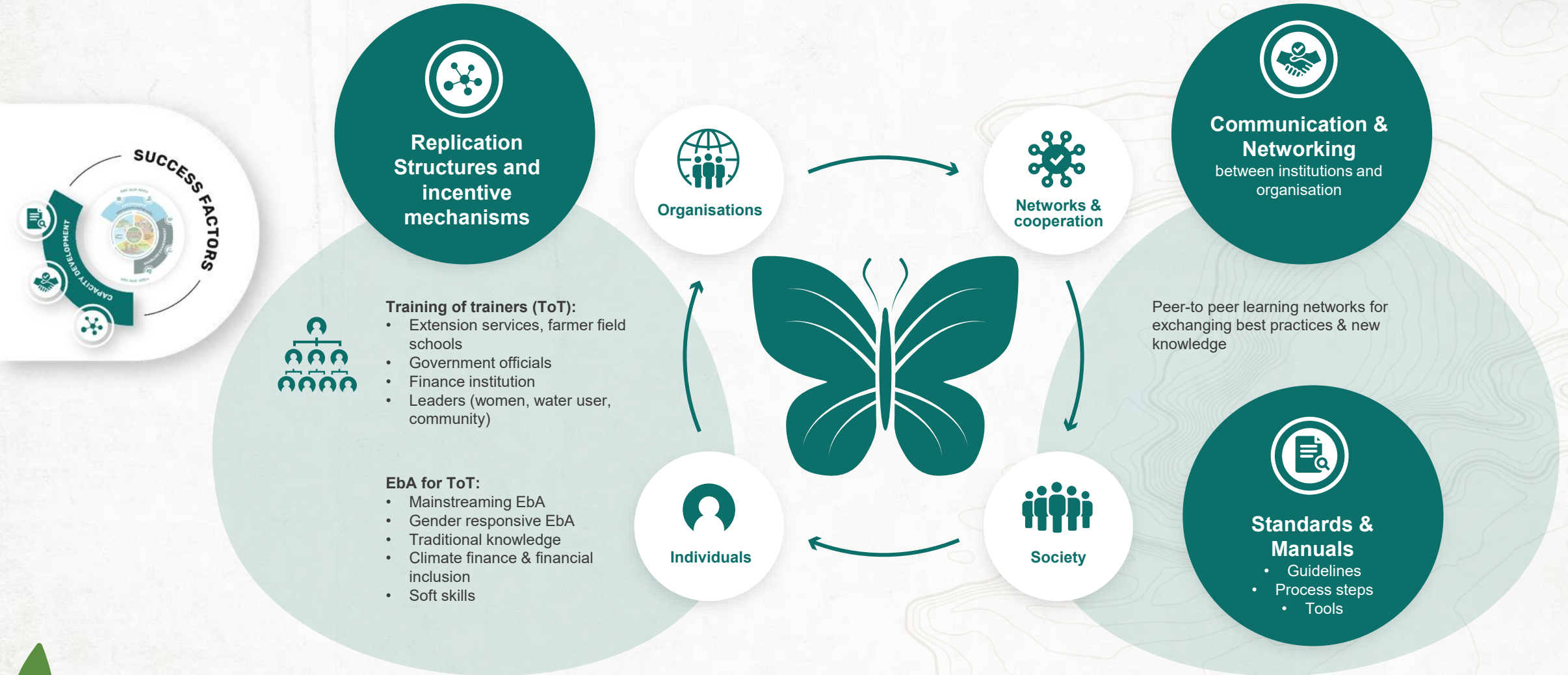
Mainstreaming EbA cycle



How to strengthen governance to scale up EbA?

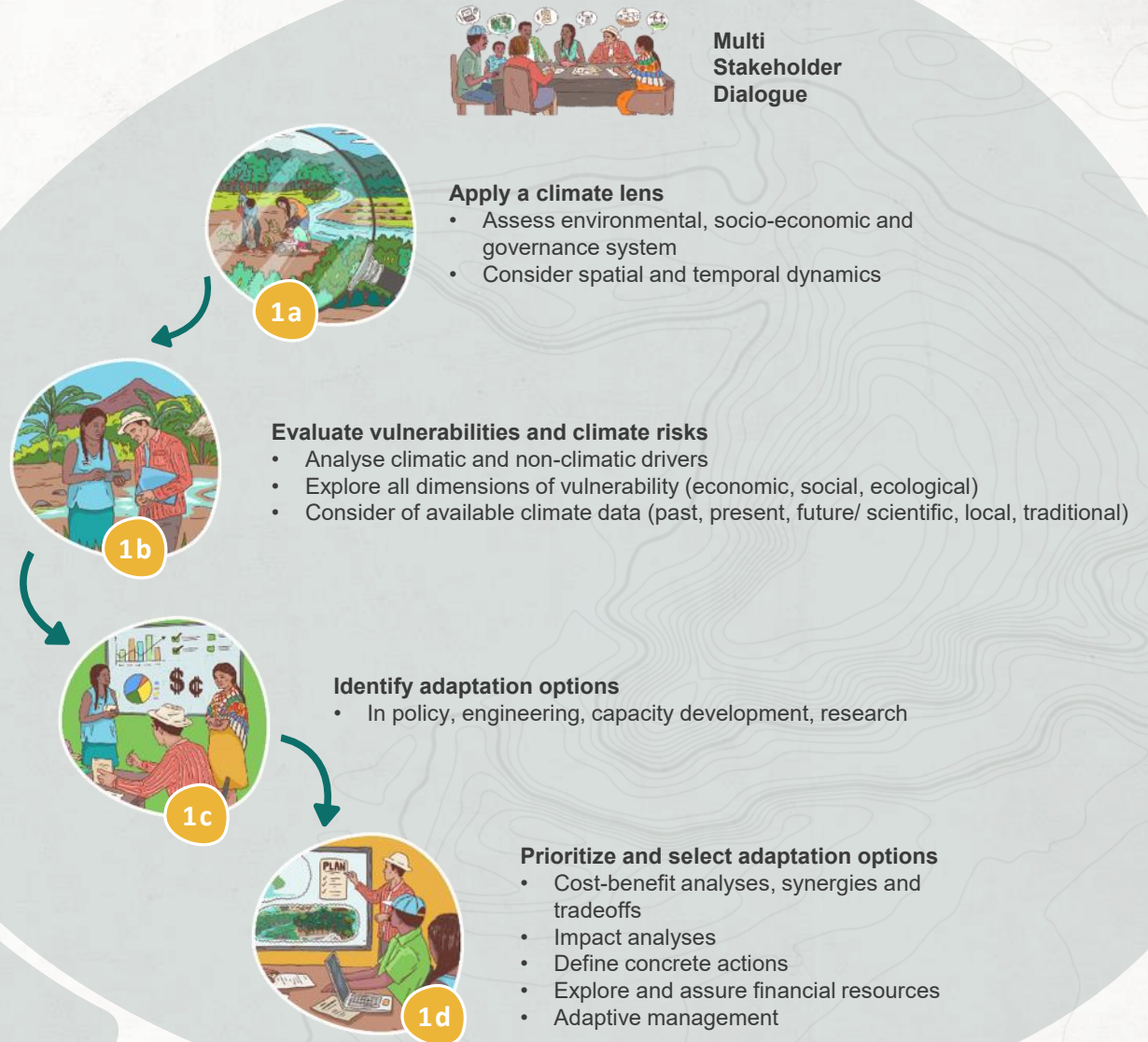
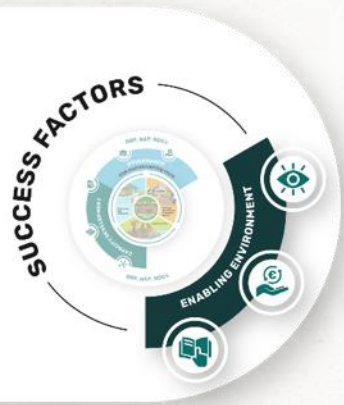


Capacity Development to scale-up EbA

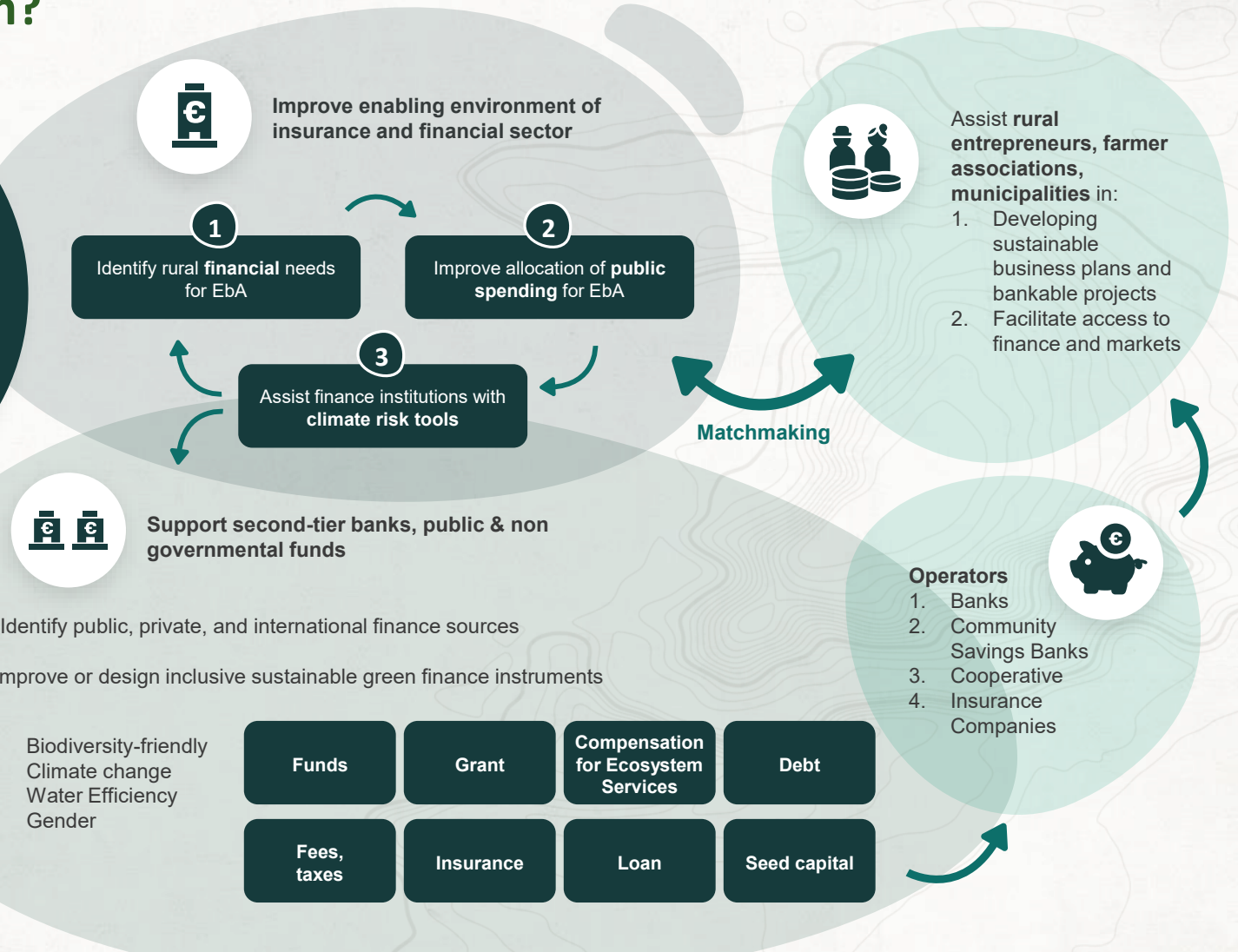


EbA LAC strengthens capacities of multipliers to provide in the long-term training and support to key stakeholders in scaling-up EbA.

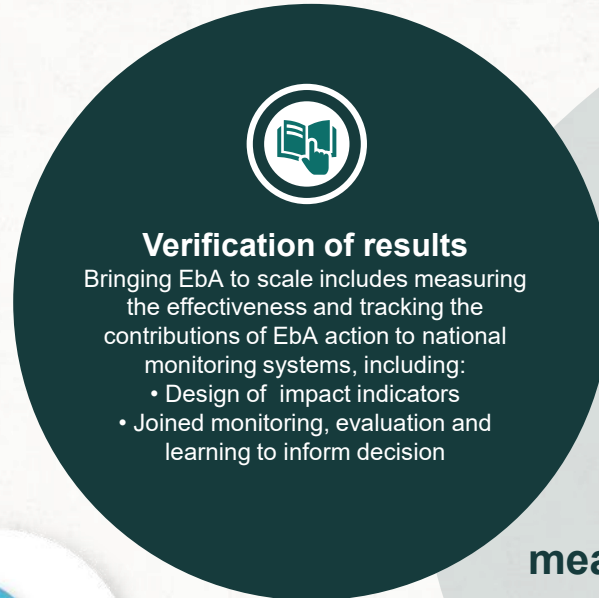
Mainstreaming EbA cycle: Planning EbA



How to close the finance gap to accelerate EbA implementation?



Measuring effectiveness & strengthening Monitoring, Evaluation and Learning



EbA measures



Where does EbA LAC work?





Climate hazards in biological corridors:

- Extreme weather events
- Water scarcity and droughts
- Heat waves
- Increased flooding

Challenges:

- Land/use change
- Loss of livelihoods
- Water insecurity due to high agricultural water supply.

Biological Corridor:
San Juan La Selva



Area of ecosystems improved or protected

1,470 ha

6,900 ha
(Target)



Landusers implement EbA

40% ♀

>280



People supported to better adapt to climate change

>1,270

4,520
(Target)



Public & private capital catalysed

>625,100 €

2,261,000 €
(Target)



Plans and policies

2

3
(Target)



Directly supported through networking and training

430 ♀

>850



Conservation Area
Tortuguero

In Costa Rica, Biological Corridors are a key conservation strategy to ensure ecological connectivity. Costa Rica has 51 biological corridors, representing about 33% of the national territory, which generate social, economic and environmental benefits. EbA Lac supports the declaration of the new Biological Corridor La Suerte.



New
Biological
Corridor



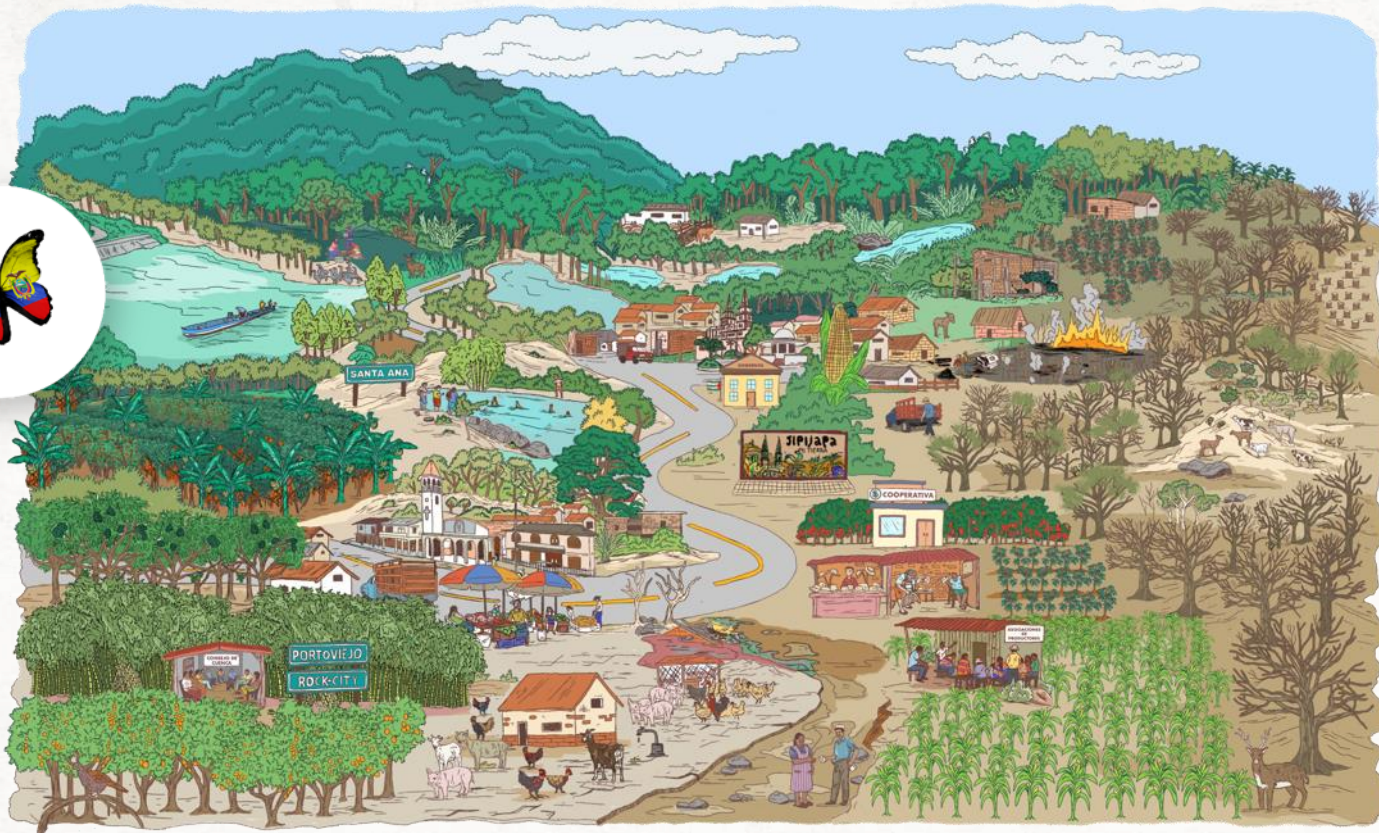
FuTurismo Climate
risk platform for
tourism sector



65 rural resilient
start-ups with
seed funding



3 new green
credit lines



Río Portoviejo Watershed

Climate hazards:

- Recurring droughts and flooding cycles
- Torrential rains
- Landslides

Challenges:

- Environmental degradation
- Degradation of wetlands
- Deforestation
- Land use change
- Loss of livelihoods.



Area of ecosystems improved or protected

1,600 ha

7,450 ha
(Target)



Landusers implement EbA

40% ♀

>2,900



People supported to better adapt to climate change

>4,930

2,910
(Target)



Public & private capital catalysed

> 2,977,980 €

3,011,290€
(Target)



Plans and policies

3

3
(Target)



Directly supported through networking and training

1,260 ♀

>2,900



Northern Manabí landscape

- 160 families from various communities in Manabí have improved their economic management and well-being by enhancing their saving habits and investment in their family farms.
- > 650 people benefit from eight community savings groups to address climate change emergencies in the community.
- 3 community tree nurseries, improve production and food security for families.



9 Development and Territorial plans with gender responsive EbA



National Climate Insurance Roadmap



2 Mio US \$ green credit



8 community saving groups for rural women



Climate hazards in intervention areas:

- Increased temperatures
- Altered rainfall patterns
- More frequent extreme weather events
- Prolonged droughts

Challenges:

- High socioeconomic vulnerability
- High dependence of livelihoods on natural resources, affected by deforestation, soil degradation and overexploitation of water resources.
- Prolonged drought reduce agricultural production, especially of staple crops like maize and beans, which are essential to the local diet.

Chimaltenango
intervention area



Area of
ecosystems
improved or
protected

1,500 ha

9,250 ha
(Target)



Landusers
implement
EbA

78% ♀

>8,800



People
supported to
better adapt to
climate change

> 10,500

>4,880
(Target)



Public & private
capital catalysed

1,963,100 €
(Target)



Plans
and policies

1

3
(Target)



Directly supported
through networking
and training

450 ♀

>960



Traditional practices of Mayan K'iche people

- Women implement sustainable agricultural practices, market the organic products they grow in nearby markets, and have access to food and medicinal plants all year round.
- Resilience and production levels of organic crops have improved through the combination of sustainable agricultural techniques with ancestral knowledge.
- Crop diversification and marketing initiatives have improved local economic development.

Quiché and Baja Verapaz landscape



EbA mainstreamed in System of Urban and Rural Development Councils



Indigenous authorities strengthened in multi-stakeholder engagement



Rural Development Learning Centers (CADERES) fostered leadership of rural and/or Indigenous women



Tools for municipalities on climate change adaptation investments

Gender responsive EbA implementation considering traditional knowledge

EbA LAC aims to accelerate gender equality through addressing the needs and challenges of women and vulnerable groups (indigenous people and youth) as well as strengthening their roles in sustainable land use management practices through designing EbA measures in a gender responsive way.



Community gardens

Ensuring food security and traditional knowledge
Improved household income, prevents malnutrition



Livestock

Access to training & markets
Matching forages to women's livestock assets (goats)
Promoting production of organic fertilizers and biopesticides



Beekeeping

Generates income
Fits in their daily routine, a high market demand
Supports pollination



Reforestation

Increased water security
Material for craft
Generates income



Water Guardians

Source water protection
Increase water security

Women's Leadership in EbA

The impact of climate change and biodiversity loss affects, above all, women because of their responsibilities for subsistence agriculture, food security, and family care.



Empowerment Through leadership

- Analysis on gendered roles in ecosystem services to address inequalities.
- Facilitate participation in decision-making on climate action.



Gender transformative Biological Corridor's (OECM) Management plan

- Representation in environment-related decision-making
- Design jointly gender responsive actions agriculture, livestock, and ecotourism.
- Development of gender indicators



Women's participation in Environmental Commission

Foster women's participation in planning processes to include actions for conservation, food security, traditional knowledge, medicinal plants and economic autonomy.

EbA LAC and the international Agendas



EbA LAC supports Ministry of Environment and Energy (Minae) in Costa Rica, the Ministry of the Environment, Water and Ecological Transition of Ecuador (MAATE), and the Ministry of Environment and Natural Resources (MARN) in Guatemala in a climate-resilient and nature-positive pathway.

Scaling up EbA contributes to the achievements of the Paris Agreement, the Kunming Montreal Global Biodiversity Framework and the Sustainable Development Goals

DIRECT



INDIRECT



Kunming-Montreal
GLOBAL BIODIVERSITY FRAMEWORK

IMPRINT

Published by:

Deutsche Gesellschaft für Internationale Zusammenarbeit (GIZ) GmbH

Registered Offices:

Bonn y Eschborn, Alemania.

Dag-Hammarskjöld-Weg 1-5

65760 Eschborn

T +49 61 96 79-0

E info@giz.de

I www.giz.de/en

The project Scaling-up Ecosystem based Adaptation (EbA) Measures in rural Latin America program is implemented by the Deutsche Gesellschaft für internationale Zusammenarbeit, IUCN (International Union for Conservation of Nature) and CATIE (The Tropical Agricultural Research and Higher Education Center).

www.ebalac.com

The project is part of the International Climate Initiative (IKI). The Federal Ministry for the Environment, Nature Conservation, Nuclear Safety and Consumer Protection (BMUV) supports this initiative on the basis of a decision taken by the German Bundestag.

EbA LAC Programme Director::

Dr. Astrid Michels

Edition:

Dr. Astrid Michels, Daniel Ortuño, Nicolas Morales and Diana Ramírez

Design:

Creative republic, Thomas Maxeiner Visual Communications,
Frankfurt /Germany

Maps:

Jorge Masis

On behalf of the German Federal Ministry for the Environment, Nature Conservation, Nuclear Safety and Consumer Protection (BMUV) through its International Climate Initiative (IKI)

San José, Costa Rica, may 2025

